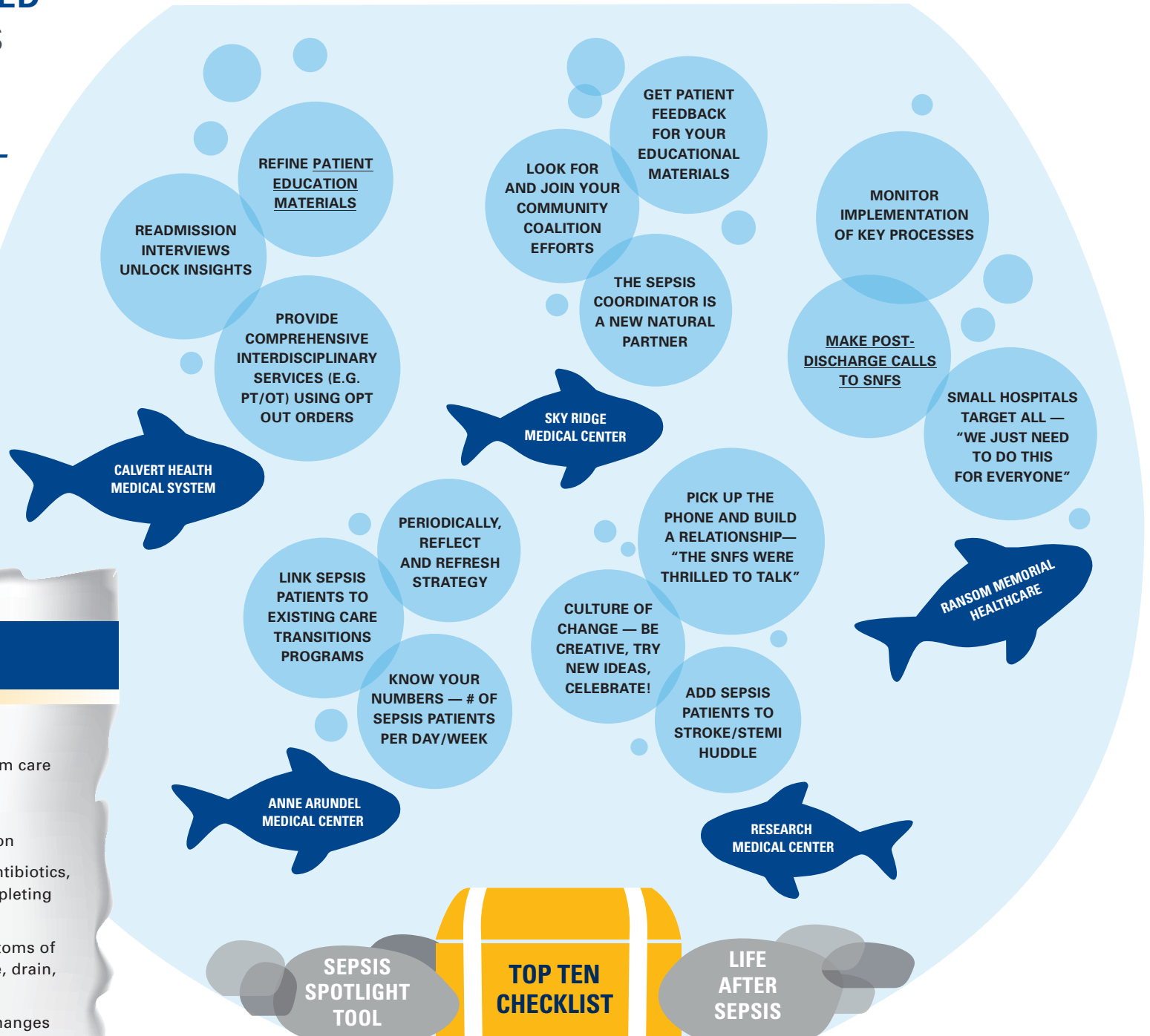


LESSONS LEARNED

FROM THE SEPSIS
READMISSIONS

FISHBOWL



BEFORE YOU DISCHARGE A SEPSIS PATIENT MAKE SURE YOU HAVE:

- ▶ Normalized the lactate
- ▶ Assessed and planned for delirium care and support
- ▶ Resolved, or see a trend towards normalization of organ dysfunction
- ▶ Narrowed the spectrum of any antibiotics, and educate on necessity of completing the course
- ▶ Educated on the signs and symptoms of infection if discharged with a line, drain, wound, catheter, etc.
- ▶ Evaluated and planned for any changes in functional status